

494

Glazed-in 'storm' louvre

GLAZED-IN
LOUVRE

ALUMINIUM



MATERIAL

- Made from aluminium sections: AlMgSi 0.5 [according to EN 12020-2]
- Stainless steel 304 mesh [6 x 6 mm]
- Finishing: anodized in satin colour [20 micron] or powder-coated in any RAL or Syntha Pulvin colour [40 micron]

DIMENSIONS

- Blade pitch: 33,3 mm
- Frame thickness: 24, 28 or 32 mm
- Specify on ordering: full width x height in mm
- Minimum dimensions: 130 x 130 mm

FIXING

- Suitable for 24, 28, 32 mm glazing sections. Other thicknesses on request.

OPTIONS

- Stainless steel 304 insect screen 2,3x2,3 or mesh [10x10/20x20 mm] or without
- Insect screen or mesh in stainless steel 316
- Water channel
- Drainage profile
- Removable mesh
- Filter
- Welded blades on frame [only RAL finish]

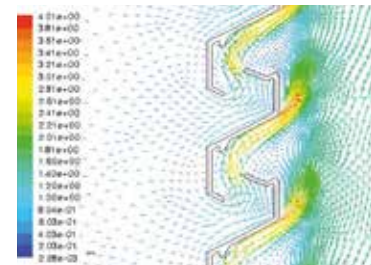


TECHNICAL SPECIFICATIONS

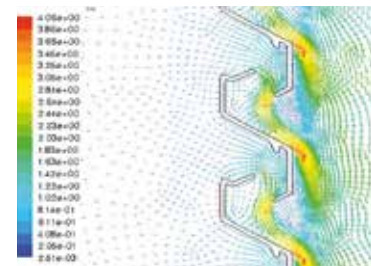
All properties are valid for the standard version of the Louvre, unless otherwise stated.

Weatherability		[EN 13030]
Class for version with mesh 6x6 mm and water channel [details see p. 12]		A4 [0.5 m/s]
Airflow		[EN 13030]
K-factor [entry]		123.5
K-factor [discharge]		118.1
C _e coefficient		0.090
C _d coefficient		0.092
Technical data		
Visual free area		57%
Physical free area		26%
IP class for version with mesh 2.3x2.3 mm and water channel [electrical installation on at least 150 mm]'		IP2XD

AIR FLOW



Supply



Extraction

TECHNICAL DRAWINGS

